

Click on a gray shaded area to see an enlarged image.

Click the button below to go back to the original view.

BACK

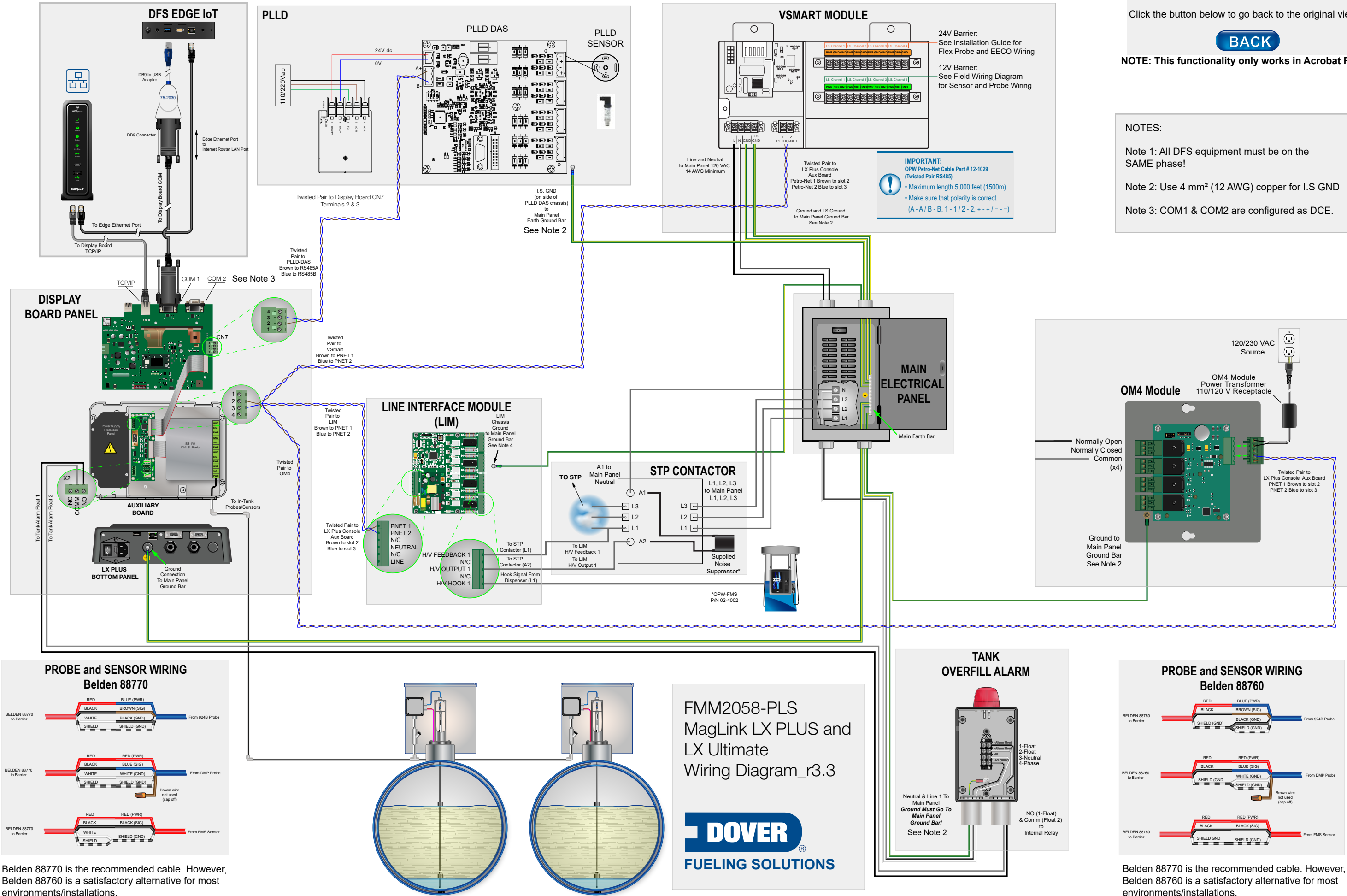
NOTE: This functionality only works in Acrobat Reader

NOTES:

Note 1: All DFS equipment must be on the SAME phase!

Note 2: Use 4 mm² (12 AWG) copper for I.S GND

Note 3: COM1 & COM2 are configured as DCE.



Belden 88770 is the recommended cable. However, Belden 88760 is a satisfactory alternative for most environments/installations.

Belden 88770 is the recommended cable. However, Belden 88760 is a satisfactory alternative for most environments/installations.